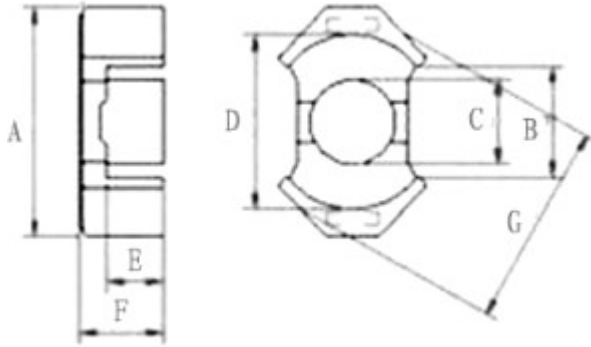


RM ferrite core



Type	Dimensions(mm)							Effective Parameter				AL nH/N ² ±25%	Weight
	A	B	C	D	E	F	G	C1 mm ⁻¹	Le mm	Ae mm ²	Ve mm ³	P40	g/pair
RM4A	10.80 ±0.30	5.80 min	3.70 ±0.15	8.10 min	3.75 ±0.15	5.40 ±0.15	9.70 ±0.30	1.62	22.5	13.9	313.0	800min	1.7
RM5	14.40 ±0.30	6.00 min	4.75 ±0.15	10.2 min	3.40 ±0.25	5.35 ±0.2	12.05 ±0.30	0.93	22.1	23.8	526.0	1850	3.8
RM6	17.60 ±0.30	8.50 min	6.30 ±0.20	12.40 min	4.30 ±0.20	6.30 ±0.20	14.4 ±0.30	0.78	28.6	36.6	1050	2200	5.6
RM7	20.20 ±0.40	1.60 min	7.10 ±0.20	15.20 min	4.50+0.3 /-0.25	6.85 ±0.15	16.85 ±0.40	0.74	32.8	43.6	1430	2400	7.8
RM8	22.75 ±0.50	10.80 min	8.40 ±0.20	17.00 min	5.60 ±0.20	8.20 ±0.20	19.35 ±0.30	0.59	38.0	64.0	2432	2700	13.0
RM10	27.80 ±0.60	13.00 min	10.70 ±0.25	21.20 min	6.40 ±0.25	9.30 ±0.20	24.15 ±0.55	0.54	48.0	88.39	4260.9	4000	24.5